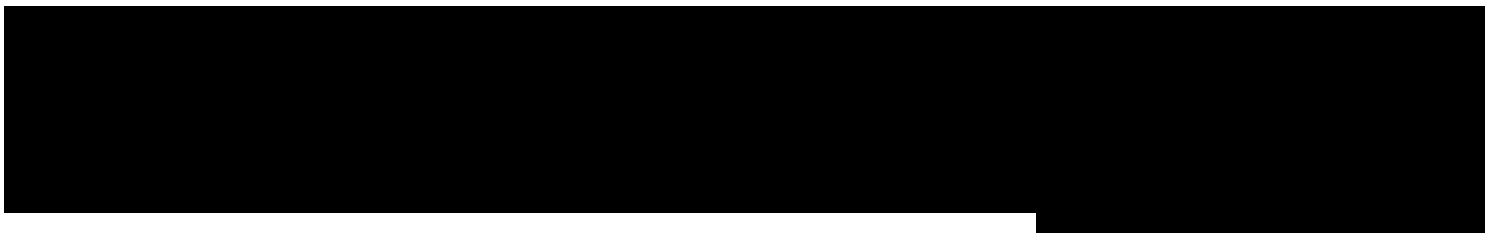


# SALOME 2-row

High yielding malting barley



### Advantages:

- Top-variety with excellent yield in lots of official-and postregistration trials in Europe
- Medium early density-type with short straw
- Best mildew resistance, good lodging resistance

### Cultivation:

Suitable for all european regions due to wide official testing all over europe

### Short profile:

---- = very low resistance/early/short,

++++ = very high resistance/late/long

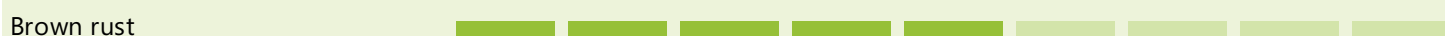
#### Plant Development



#### Vitality



#### Plant Health



#### Quality



# SALOME 2-row

High yielding malting barley

## Plant development and vitality:

Ear emergence	<div></div>	<div></div>	<div></div>	<div></div>	<div></div>	<div></div>	<div></div>	<div></div>	<div></div>
Maturity	<div></div>	<div></div>	<div></div>	<div></div>	<div></div>	<div></div>	<div></div>	<div></div>	<div></div>

## Yield structure:

Ears/m <sup>2</sup>	<div></div>	<div></div>	<div></div>	<div></div>	<div></div>	<div></div>	<div></div>	<div></div>	<div></div>
Grains/ear	<div></div>	<div></div>	<div></div>	<div></div>	<div></div>	<div></div>	<div></div>	<div></div>	<div></div>
TGW	<div></div>	<div></div>	<div></div>	<div></div>	<div></div>	<div></div>	<div></div>	<div></div>	<div></div>

## Sowing:

Time of sowing	beginning of March until end of April
Seed rate	locally adapted

## Straw:

Plant height	very short to short
Lodging resistance	<div><div></div><div></div><div></div><div></div><div></div><div></div><div></div><div></div><div></div></div>
Plant growth regulators	locally adapted

## Disease resistance:

Mildew	<div></div>	<div></div>	<div></div>	<div></div>	<div></div>	<div></div>	<div></div>	<div></div>	<div></div>
Net blotch	<div></div>	<div></div>	<div></div>	<div></div>	<div></div>	<div></div>	<div></div>	<div></div>	<div></div>
Rhynchosporium	<div></div>	<div></div>	<div></div>	<div></div>	<div></div>	<div></div>	<div></div>	<div></div>	<div></div>
Brown rust	<div></div>	<div></div>	<div></div>	<div></div>	<div></div>	<div></div>	<div></div>	<div></div>	<div></div>
Plant protection	One application with focus on rhynchosporium and brown rust								

## Quality:

Grading (> 2,2 mm)	<div></div>	<div></div>	<div></div>	<div></div>	<div></div>	<div></div>	<div></div>	<div></div>	<div></div>
Grading (> 2,5 mm)	<div></div>	<div></div>	<div></div>	<div></div>	<div></div>	<div></div>	<div></div>	<div></div>	<div></div>
Hectolitre weight	<div></div>	<div></div>	<div></div>	<div></div>	<div></div>	<div></div>	<div></div>	<div></div>	<div></div>
Raw protein content	very low								